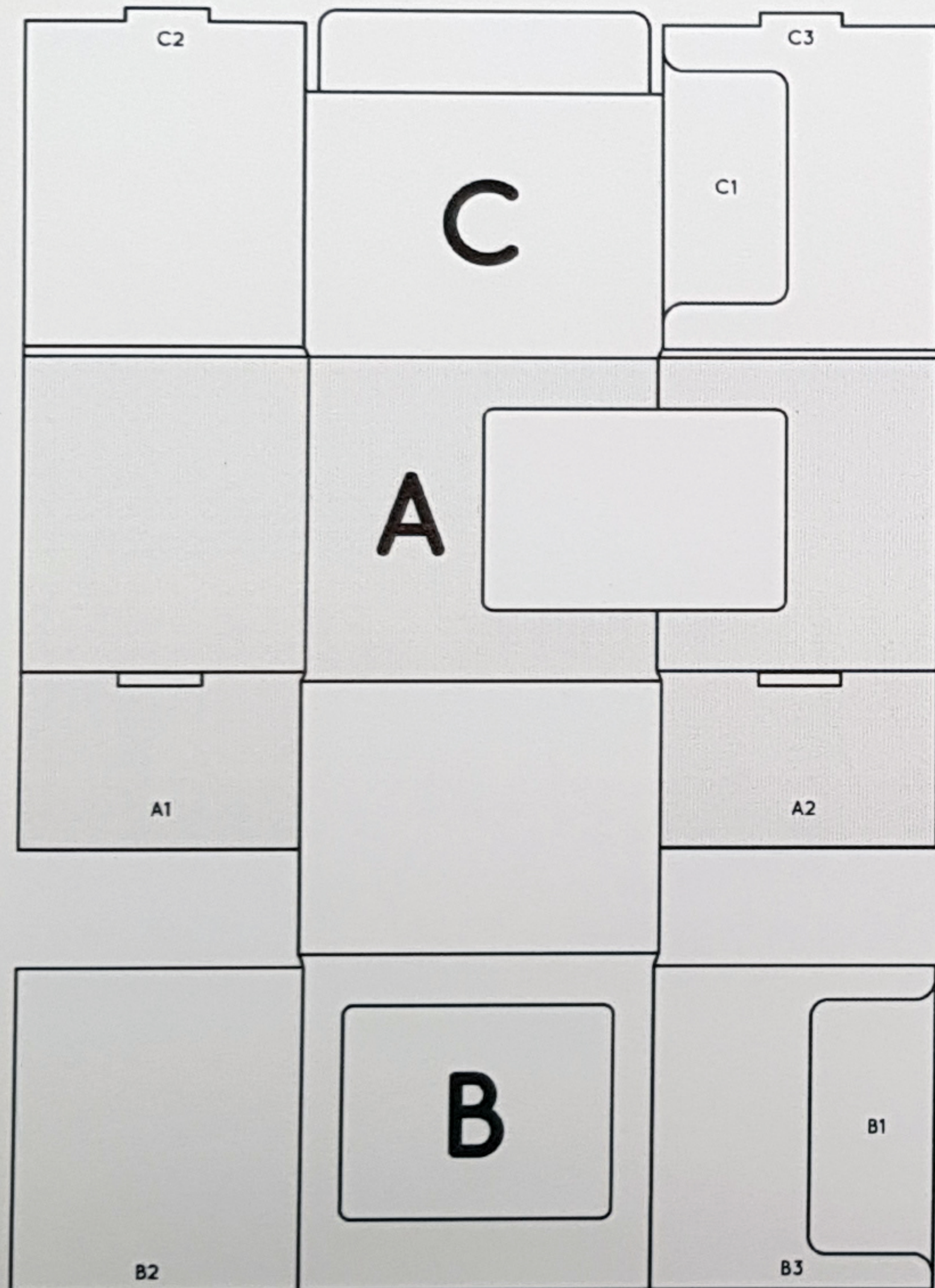


White Mug Box Assembly



1. Start with the brown side facing up. Prefold all crease lines and remove B1 and C1 tabs.
2. Fold A1 and A2 tabs up.
3. Fold left and right sides of A, C2 and C3 up.
4. Fold B2 and B3 tabs up.
5. Fold whole of B up so that B2 and B3 fit inside A.
6. Fold C2 and C3 down to keep B2 and B3 in place.
7. Fold the rest of C down.

